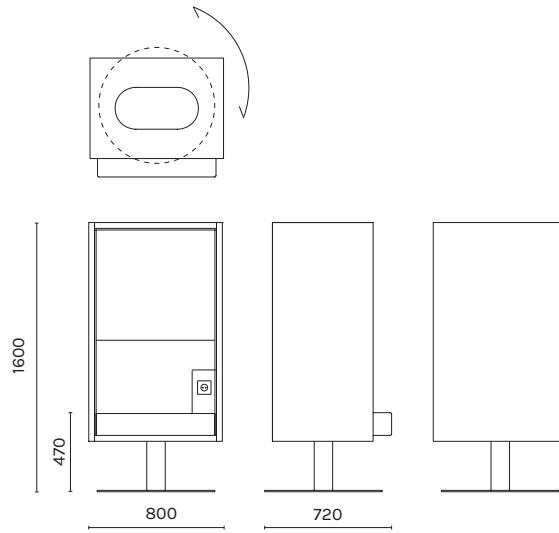
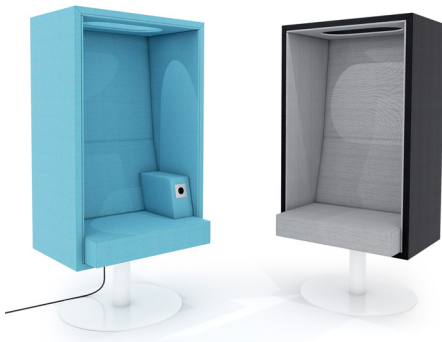


INTO

the Nordic Silence



CUBE SOLO

CUBE SOLO is a rotating swivel chair. This sheltered lounge chair for one person provides visual privacy within an acoustically friendly and comfortable environment. There is a hole on the ceiling to let the light in.

TECHNICAL INFORMATION

Upholstered with fabric.
Seat and backrest upholstered polyurethane foam.
Powder coated steel tube base.

MATERIAL DESCRIPTION

Upholstery fabric options:

Standard price, category 1:
CAMIRA - Main Line Flax

Category 2:
KVADRAT - Remix 3
CAMIRA - Synergy
GABRIEL - Fame
PYTON - Delfos FR

Category 3:
KVADRAT - Hallingdal 65
KVADRAT - Steel Cut Trio 3

Steel base color:

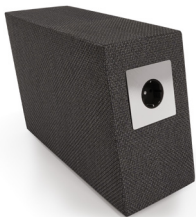
RAL 9016 white

OPTIONS

An optional armrest with electrical socket is available.

MEASUREMENTS

W800 x D720 x H1600 mm



CUBE ARMREST

TECHNICAL INFORMATION

Built-in electrical socket.
The length of the electric cord is 5 m.

MATERIAL DESCRIPTION

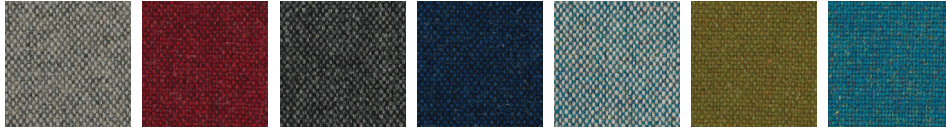
Veneer structure.
Upholstered with fabric.

MEASUREMENTS

W155 x D340 x H260 mm

SOFA FABRIC FOR CUBE SOLO: MAIN LINE FLAX FROM CAMIRA | STANDARD PRICE, CATEGORY 1

Composition: 70% Virgin wool, 30% Flax
 Durability: 50.000 Martindale
 Lightfastness: 5
 Crocking: 3/wet, 4/dry
 Sustainability: Complies with EU ecolabel "The Flower", Compostable
 Cleaning: Vacuuming and dry cleaning
 Fire resistant: Yes



MLF02 MLF14 MLF16 MLF19 MLF24 MLF30 MLF37



SOFA FABRIC FOR CUBE SOLO: PYTON FROM DELFOS FR | CATEGORY 2

Synthetic leather
 Composition: 77% PVC, 23% CO
 Abrasion / Martindale: dry = 51.200 /cycles, wet = 12.800 /cycles
 Lightfastness: 5
 Crocking: 4-5
 Breathable
 Fire resistant: Yes / Flame retardant, IMO Certificate

Cleaning:
 Because of its characteristics, clean and care the material frequently, with lukewarm water and a damp cloth, preferably of micro fibre. Soiling may be treated with a mild soap and proceed next to its drying by using a hairdryer or, failing that, a drycloth. It should be avoided that areas that have been treated for cleaning remain wet



0796 Negro 1112 Smoke 0793 Mocca 1168 Cashmere



SOFA FABRIC FOR CUBE SOLO: SYNERGY FROM CAMIRA | CATEGORY 2

Composition: 95% Virgin wool, 5% Polyamide
 Durability: 100.000 Martindale
 Pilling: 4
 Lightfastness: 5
 Cleaning: vacuuming and dry cleaning
 Fire resistant: Yes

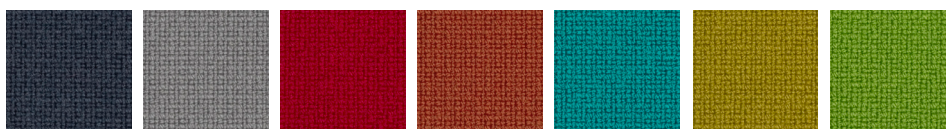


LDS08 LDS16 LDS17 LDS48 LDS56 LDS59 LDS87



SOFA FABRIC FOR CUBE SOLO: FAME FROM GABRIEL | CATEGORY 2

Composition: 95% wools of New Zealand, 5% polyamide
 Durability: 200.000 Martindale
 Pilling: 4
 Lightfastness: 5-7
 Crocking: 4-5, wet and dry
 Sustainability: Complies with EU ecolabel "The Flower" and Oeko-Tex Standard, free of heavy metals
 Cleaning: Dry cleaning
 Fire resistant: Yes



60017 60078 64089 64168 67016 68004 68035

