

CUBE

CUBE is a sheltered sofa that is recommended to place two facing each other, in which case the sofas form an acoustically pleasant environment.



MATERIAL DESCRIPTION

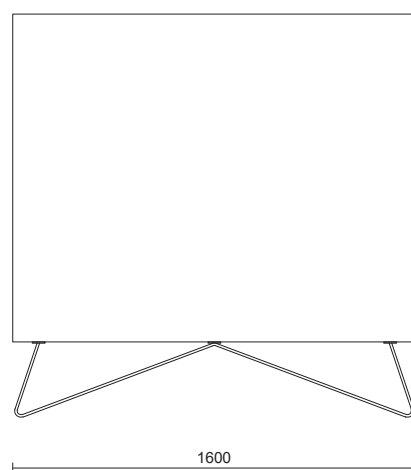
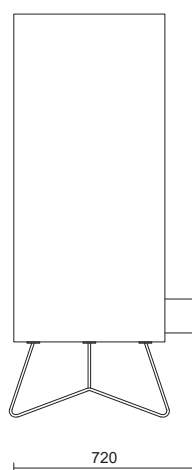
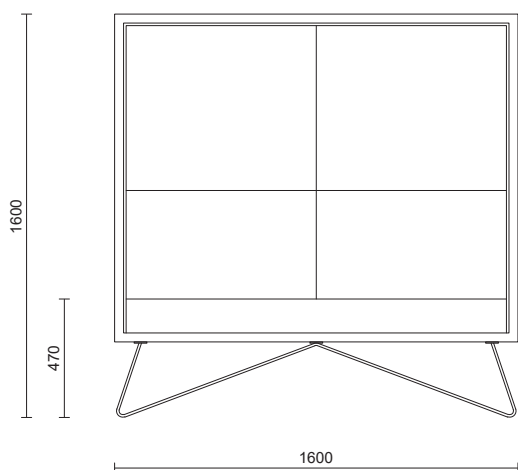
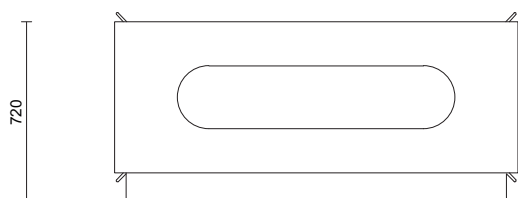
Frame is fully upholstered with fabric.
Seat and backrest upholstered polyurethane foam.
Powder-coated steel tube base.

OPTIONS

An optional armrest with electrical socket is available.

MEASUREMENTS

W1600 x D720 x H1600 mm





All our materials comply with M1 emission classification.

CUBE ARMREST

TECHNICAL INFORMATION

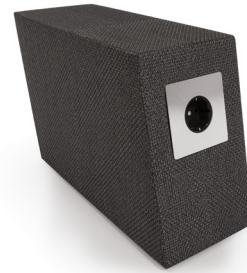
Built-in electrical socket.
The length of the electric cord is 3 m.

MATERIAL DESCRIPTION

Veneer structure.
Upholstered with fabric.

MEASUREMENTS

W155 x D340 x H260 mm



SOFA FABRIC FOR CUBE: MAIN LINE FLAX FROM CAMIRA | STANDARD PRICE, CATEGORY 1

Composition: 70% Virgin wool, 30% Flax
Durability: 50.000 Martindale
Lightfastness: 5
Crocking: 3/wet, 4/dry
Sustainability: Complies with EU ecolabel "The Flower", Compostable
Cleaning: Vacuuming and dry cleaning
Fire resistant: Yes



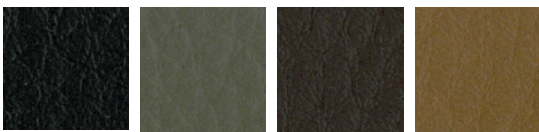
MLF02 MLF14 MLF16 MLF19 MLF24 MLF67 MLF37



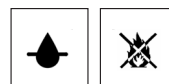
SOFA FABRIC FOR CUBE: PYTON FROM DELFOS FR | PRICE CATEGORY 2

Synthetic leather
Composition: 77% PVC, 23% CO
Abrasion / Martindale: dry = 51.200 /cycles, wet = 12.800 /cycles
Lightfastness: 5
Crocking: 4-5
Breathable
Fire resistant: Yes / Flame retardant, IMO Certificate

Cleaning:
Because of its characteristics, clean and care the material frequently, with lukewarm water and a damp cloth, preferably of micro fibre. Soiling may be treated with a mild soap and proceed next to its drying by using a hairdryer or, failing that, a drycloth. It should be avoided that areas that have been treated for cleaning remain wet



0796 Negro 1112 Smoke 0793 Mocca 1168 Cashmere



breathable and flame
retardant quality



efficient material



long-life



easy-to-clean



aesthetic value

SOFA FABRIC FOR CUBE: SYNERGY FROM CAMIRA | PRICE CATEGORY 2

Composition: 95% Virgin wool, 5% Polyamide
Durability: 100.000 Martindale
Pilling: 4
Lightfastness: 5
Cleaning: vacuuming and dry cleaning
Fire resistant: Yes



LDS08 LDS16 LDS17 LDS48 LDS56 LDS59 LDS87



SOFA FABRIC FOR CUBE: GRAIN/2288 FROM GABRIEL | PRICE CATEGORY 2

Composition: 80% post-consumer recycled polyester / 20% polyester

Durability: 100.000 Martindale

Pilling: 5

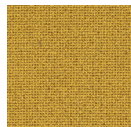
Light fastness: 5-7

Cleaning: wash or dry cleaning

Fire resistant: Yes



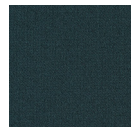
61247



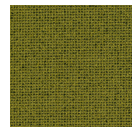
62123



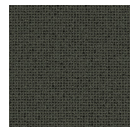
64251



66233



68258



60323

OEKO-TEX®
CONFIDENCE IN TEXTILES
STANDARD 100

