

## POD PHONE

POD PHONE is a phone booth that improves privacy when taking phone calls in open spaces and office environments.

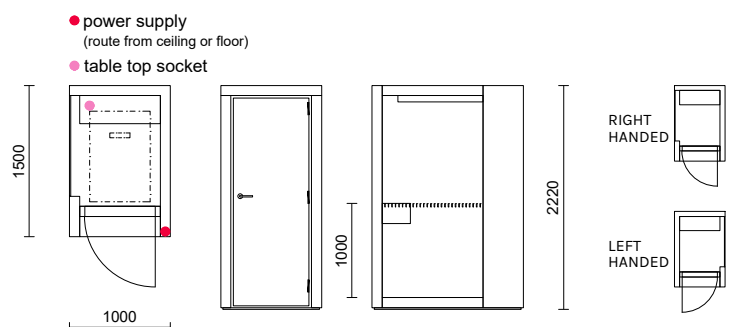


### TECHNICAL INFORMATION

AIR FLOW	Fully automated ventilation controlled by motion sensor. As standard, set to 1 hour and is adjustable up to 99 minutes. Air flow 22l/s.
LIGHTS	Fully automated lights controlled by motion sensor. As standard, set to 1 hour and is adjustable up to 99 minutes. LED light set on the ceiling. Lumen 871.
WHEELS	Installation wheels included.
ENERGY CONSUMPTION PER HOUR	Total 0,01895 kWh. Fans 0,00445 kWh. Lights 0,0145 kWh. Max load 8 A.
SOCKET	One power socket on the table.
POWER CONNECTION	From the ceiling or floor. The length of the power cord is 3 m.

### MEASUREMENTS

EXTERNAL DIMENSIONS	W1000 x D1500 x H2220 mm
INNER DIMENSIONS	W800 x D1100 x H2040 mm
DOOR	8 x 21
PACKAGE DIMENSIONS	W800 x D2400 x H1500 mm
WEIGHT	460 kg 307 kg/m <sup>2</sup>



## MATERIAL DESCRIPTION

EXTERIOR	Melamine or veneered frame.
INTERIOR	Acoustic panel on the ceiling. Walls x 2 and floor coated with carpet.
DOOR	Painted MDF door. Melamine door side panels. Door handle with satin finished stainless steel.
WINDOW	Laminated acoustic safety glass window 10 mm. Glass window includes the INTO stripe window taping.
TABLE	MDF table with water-based paint.

## ADD-ON FEATURES

### POD PANEL

POD PANEL is an acoustic-friendly add-on piece for POD rooms. It can be used as a surface to attach notes, plans, and other sketches. Panels attaches easily to the POD exterior and softens the surrounding sound environment.



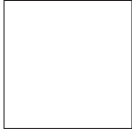
### OTHER AVAILABLE ADD-ON FEATURES

Height adjustable stool  
Clothing hook  
Eletronical lock system  
Booking system  
Smart glass  
Screen holder  
USB charger  
Extra power sockets  
AV systems (web camera, microphone)  
Automatic fire extinguisher system

## SURFACE FINISHES FOR POD ROOMS

### STANDARD PRICE, CATEGORY 1

Melamine color options



White



Dark grey

### PRICE CATEGORY 2

Veneer options



Pine



American oak



Black oak

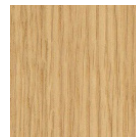
## SURFACE FINISHES FOR DOOR & DOOR SIDE PANELS

### STANDARD PRICE, CATEGORY 1



White

### PRICE CATEGORY 2



American oak



Clear glass 10 mm

comes with white door panels

## CARPETS FOR POD ROOMS: EX-DONO QUARTET FROM FLETCO | STANDARD PRICE, CATEGORY 1

Composition: Polyester non woven

Static electrical propensity: Antistatic

Impact sound reduction: 25 dB

Classification for use: Commercial / heavy use

Fire resistant: Yes



393300

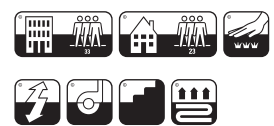


393340



393350

Ask for more colors: [sales@intoconcept.com](mailto:sales@intoconcept.com)



## CEILING ACOUSTIC PANEL FABRIC: SOUL FROM GABRIEL | STANDARD PRICE, CATEGORY 1

Composition: 100% wool

Lightfastness: 5-7

Rubbing fastness: 4/wet, 4-5/dry

Sustainability: Complies with STANDARD 100 by OEKO-TEX

Meet Möbelfakta requirements

Cleaning: regular vacuum cleaning

Fire resistant: Yes (S 476 Part 7, class 1 ÖNORM B 3825-B1-3800-Q1 UK)



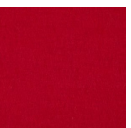
66104



67039



68131



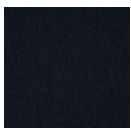
64086



62059



61196



60182

OEKO-TEX®  
CONFIDENCE IN TEXTILES  
STANDARD 100



10  
year guarantee  
against wear through